



QS-SUMMARYBOX

Server box principale per riepilogo della numerazione di turno

**Manuale Utente
per la gestione
del dispositivo**

QS-SUMMARYBOX

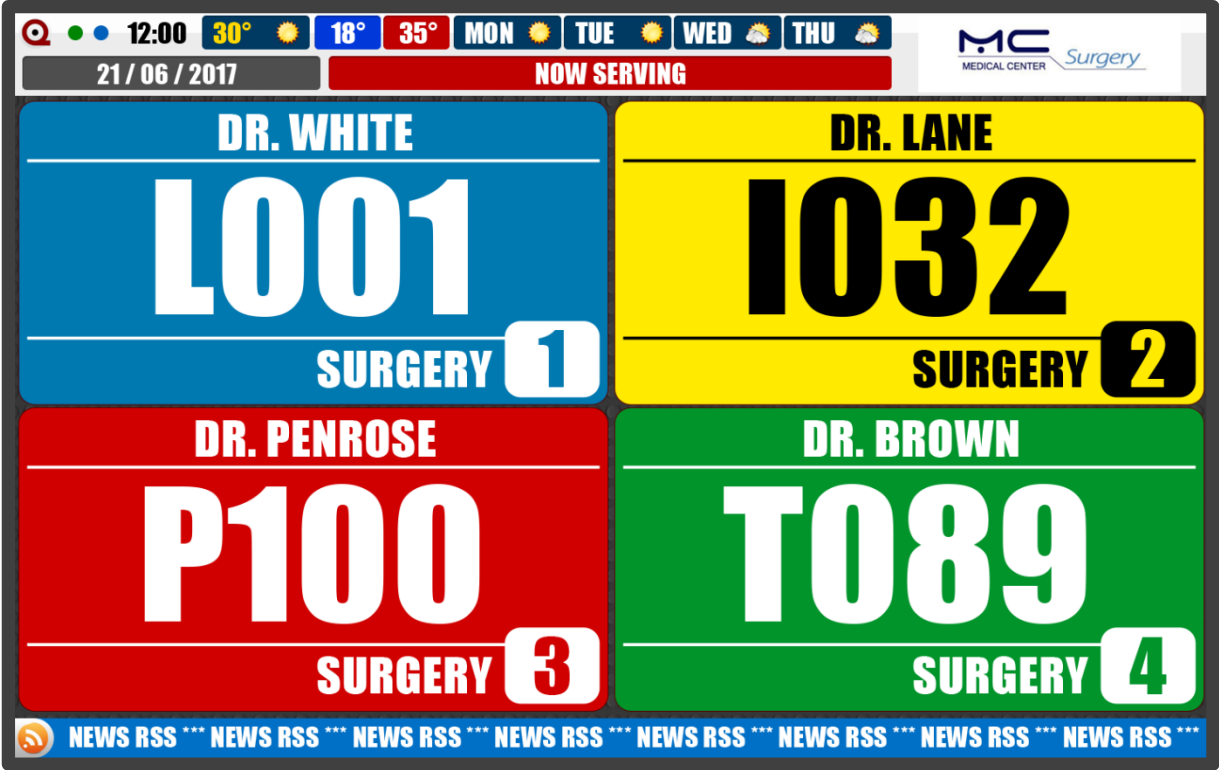
Client box for turn summary

User guide for device management

Overview

Product description and context

QS-SUMMARYBOX is a client box with Android operating system that allows you to view, appropriately connected in HDMI to a monitor, the summary of the last managed numbering for each present service. To enrich the screen we have the weather forecast, the customer logo and the news rss. The product home screen looks like the following photo:



Errore. Il segnalibro non è definito. – QS-SUMMARYBOX home screen

How it works

This product requires a monitor, a TV, or a device that has an HDMI input, and possibly speakers to play audio. QS-SUMMARYBOX also needs to be connected to the same network (LAN or WiFi) as a queue management server (such as Q-System or MicroTouch) viewing calls and if the Internet is available it can show weather forecasts and/or last-minute news via FEED RSS.

First Installation

Unpackaging

Installing QS-SUMMARYBOX consists of a few simple steps:

- Take the box out of the box and put the batteries in the supplied remote control
- Connect the box to the power supply
- Connect the network cable
- Connect the monitor's HDMI cable
- Tune the monitor to the chosen HDMI source
- Wait for the system to load

When initialization has occurred, the main screen shown in [Figure 1](#) will appear on the monitor.

These operations are common for each QS-SUMMARYBOX installed.

System configuration

Q-Discovery

Q-Discovery is the universal Visel tool for configuring LAN devices. It consists of a PC-compatible application running Windows XP or higher. Visel recommends installing Q-Discovery only on the administrator's PC, which prevents non-workers from tampering with the system configuration.

- Download Q-Discovery from this link: <http://www.visel.it/en/download>
- Install and launch the application
- Click "Search for devices" to start setting up

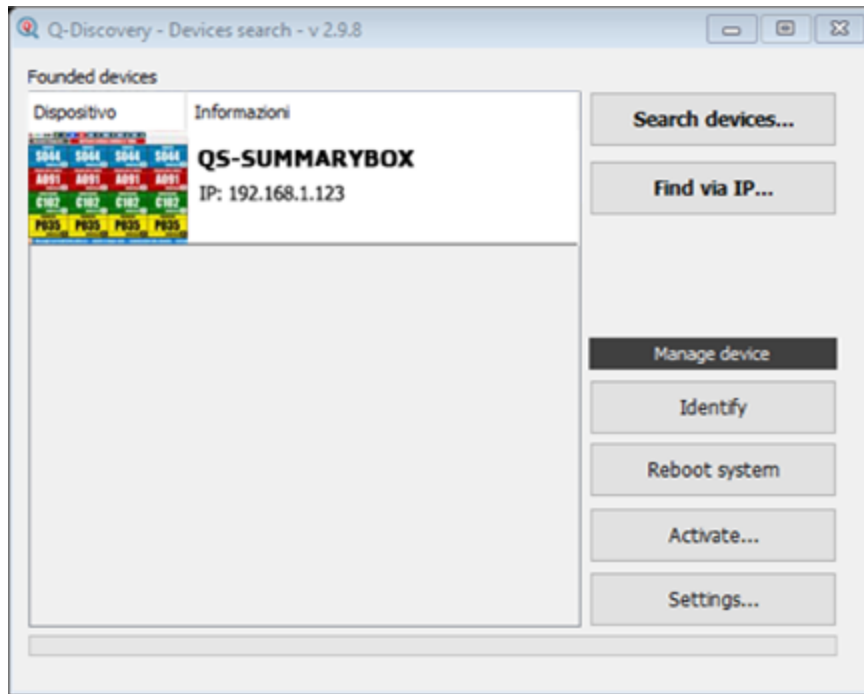
QS-SUMMARYBOX

QS-SUMMARYBOX can work in both DHCP and with a static IP address.

To configure a static IP, follow these steps:

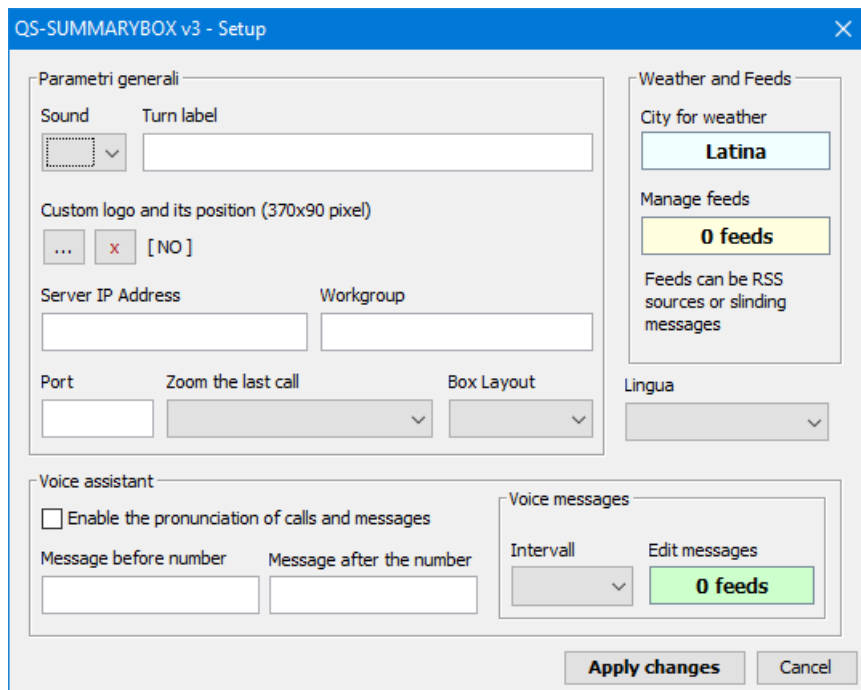
- Use the supplied remote control or connect a USB mouse to the box
- Press the "return" button on the remote control or the right mouse button to exit the Q-SUMMARY application
- Go to the system settings and the "Cable" section and set the network parameters.
- Exit the settings and goto themain menu to launch the Q-SUMMARY application

If QS-SUMMARYBOX is configured correctly, you can manage its settings using the Q-Discovery application.



Errore. Il segnalibro non è definito. – **Q-Discovery:**
Searching for Devices

Select QS-SUMMARYBOX and press "Settings". The secondary screen will appear:



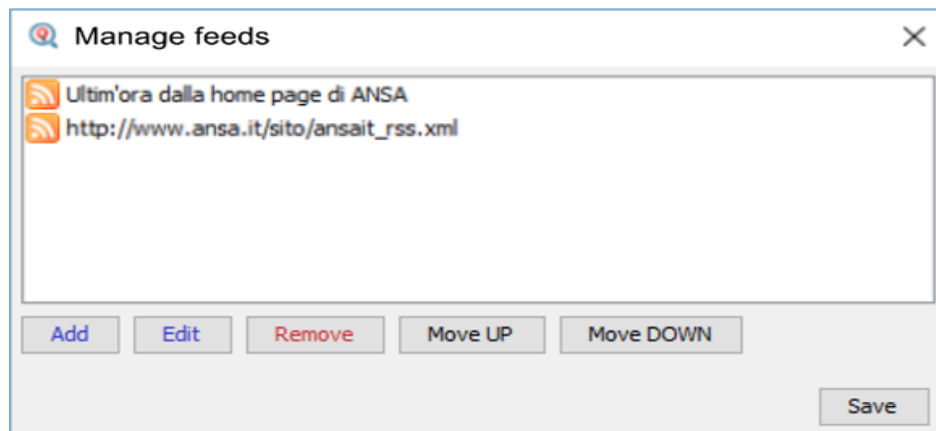
General Parameters

Property	Description
Box Layout	The number of boxes equivalent to the number of services set on the queue management system.
Sound	Sound effect when the call arrives
Turn label	Customizable text shown at the top right of the monitor
Zoom	If enabled, displays the last call with increased size
Custom logo	Allows you to choose an institutional logo
Language	User interface language for strings used on the monitor
IP Server	The IP address of the queue management server
Port	Communication port (default 5001)
Group	Workgroup for incoming calls

Weather and Feeds

By clicking on the box containing the name of the city you will be able to set the current city for which to get the weather forecast.

By clicking on the box containing the number of feeds you will be able to configure a list of RSS sources or custom texts to be queued in the serpent that scrolls down:



Errore. Il segnalibro non è definito. - **Managing FEED**

Then use the action keys to add, edit, delete, or move sources for feeds. To apply the changes, click "Save".

Narrator

The device is equipped with a smart voice assistant that gives voice to everything the user writes. It can also reproduce the name and number of the calling seat.

Property	Description
Enable	By enhancing the checkbox, you can enable/disable the voice assistant.
Message before number	Text to play before the call is spoken
Message after number	Text to play after the call is spoken

Voice messages

The voice assistant can play a schedule of user-set phrases at regular deadlines.

Property	Description
Range	Defines the time interval before the next sentence is spoken
Message management	By clicking on the box you will be able to manage the schedule of the sentences similar to what happens with the Feed Management shown in Figure 10 .

For changes to the overall device configuration to take effect, press "Apply Changes".

Voice Alternatives

This product takes advantage of the capabilities of Google's preinstalled text-to-speech engine. If the voice you use is not to your liking you can install a different text-to-speech engine directly from Google Play (the Android digital store) after adding a Google account on the BOX. To add a Google Account, enter a mouse (or use the included remote control) and navigate to Settings -> Accounts and then add your Google Account. Among the text-to-speech engines on the market, Visel recommends **Vocalizer TTS**, which provides voices in many more languages than the basic one. Each item can be purchased directly from the store or within the app itself for the price of about € 4.00 each one. To enable an alternative text-to-speech engine, simply go to Settings -> Language -> Text-to-Speech Output and enable the alternate engine.

For more information about Vocalizer TTS, visit this link:

https://play.google.com/store/apps/details?id=es.codefactory.vocalizertts&hl=en_US

Troubleshooting

I can't find QS-SUMMARYBOX using Q-Discovery

Verify that QS-SUMMARYBOX and the PC on which you are running Q-Discovery are connected to the same network. If so, check your network for firewalls.

Q-Discovery does not apply changes

Try to start Q-Discovery with Administrator rights

QS-SUMMARYBOX does not display calls

Verify that the correct QUEUE management server IP address has been entered in the QS-SUMMARYBOX configuration panel in Q-Discovery.

QS-SUMMARYBOX does not show weather forecasts or news RSS

Verify that QS-SUMMARYBOX is connected to the internet.

If other types of problems arise, we recommend that you contact our telephone support.

Visel Italiana Srl
Via Maira snc
04100 Latina (LT)
Tel: : 39 0773 416058
Email: sviluppo@visel.it
Document drawn up on 11/12/2018