



QS-MARKETBOX PRO

Summary display for shift numbering summary with built-in digital
Signage

**Device
Management
User Guide**

QS-MARKETBOX PRO

Virtual display for shift numbering summary with built-in digital signage

User Guide for Device Management

Overview

Product description and context

QS-MARKETBOX is a client box with Android operating system that allows you to view, appropriately connected in HDMI to a monitor, the summary of the shift numbering for each existing service. In addition to queue management, you can view a multimedia playlist, enriched by weather forecasts and RSS news headlines.



Figures 1QS-MARKETBOX home screen

Operation

This product requires a monitor, TV, or device that has an HDMI input and possibly speakers to play audio. QS-MARKETBOX also needs to be connected to the same network (LAN or WiFi) as a queue management server (such as Q-System or MicroTouch) the display of calls, and if the Internet is available it is able to show weather forecasts and/or last-hour news via RSS FEED.

First Installation

Unpackaging

Installing QS-MARKETBOX consists of a few simple steps:

- Take the box out of the box and insert the batteries into the remote control provided
- Connect the box to the power supply
- Connect the network cable
- Connect the monitor's HDMI cable
- Tune the monitor to your chosen HDMI source
- Wait for the system to load

When initialization is successful, the main screen shown in [Figure 1](#) will appear on the monitor.

These operations are common for each QS-MARKETBOX installed.

System configuration

Visel Sync

Visel Sync is the tool you need to configure this product. It consists of a compatible application for PCs running Windows XP or higher. Visel recommends that you install Visel Sync only on your administrator's PC, so that non-experts can tamper with the system configuration.

- Download Visel Sync from this link: <http://www.visel.it/it/download>
- Install and launch the application
- Click on the magnifying glass to start the search

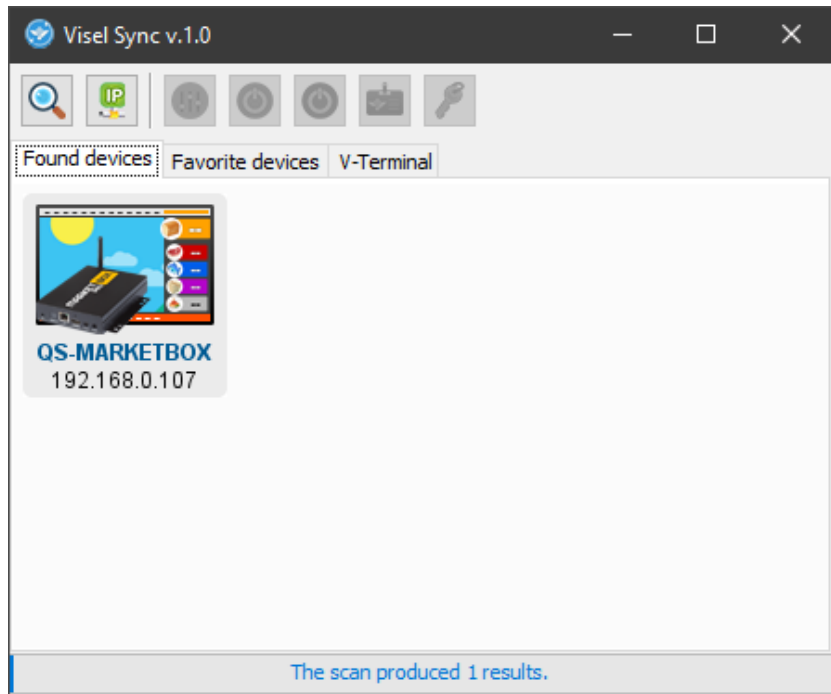
QS-MARKETBOX

QS-MARKETBOX can work on both DHCP and a static IP address.

To configure a static IP, follow these steps:

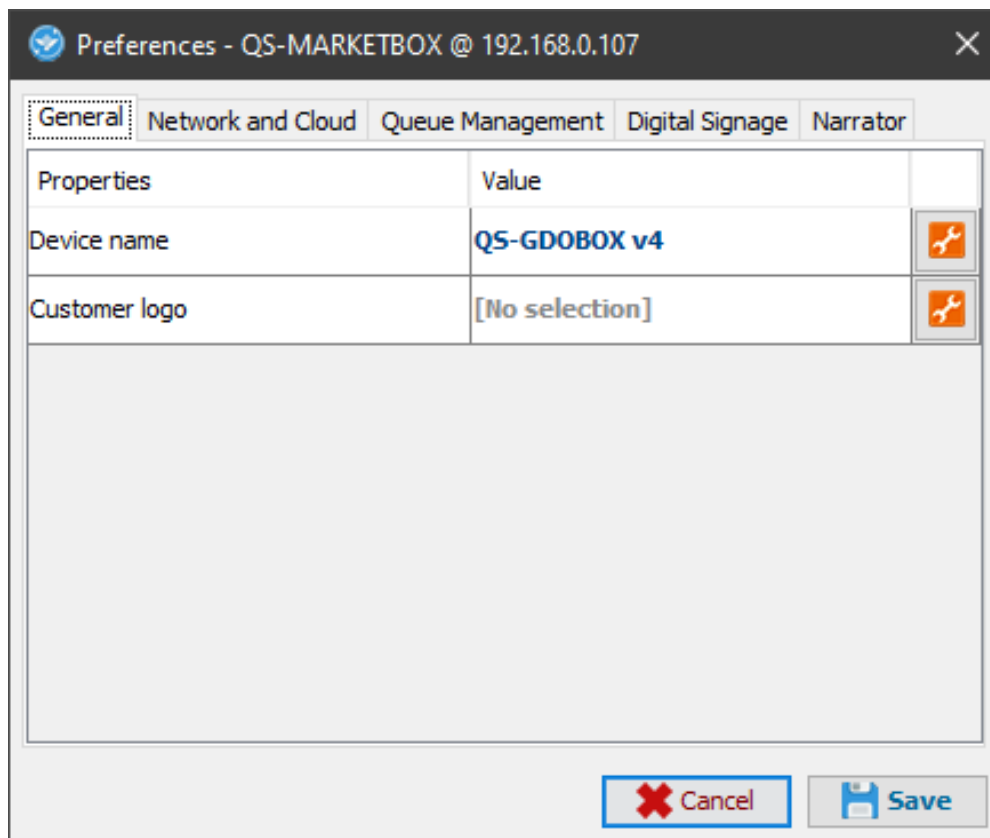
- Use the supplied remote control or connect a USB mouse to the box
- Press the "return" button on the remote control or the right mouse button to exit the Q-LCD application
- Go to the system settings and the "Cable" section and set the network parameters.
- Exit the settings and go to the main menu to launch the Q-LCD application

If QS-MARKETBOX is configured correctly, you can manage its settings through the Visel Sync application.



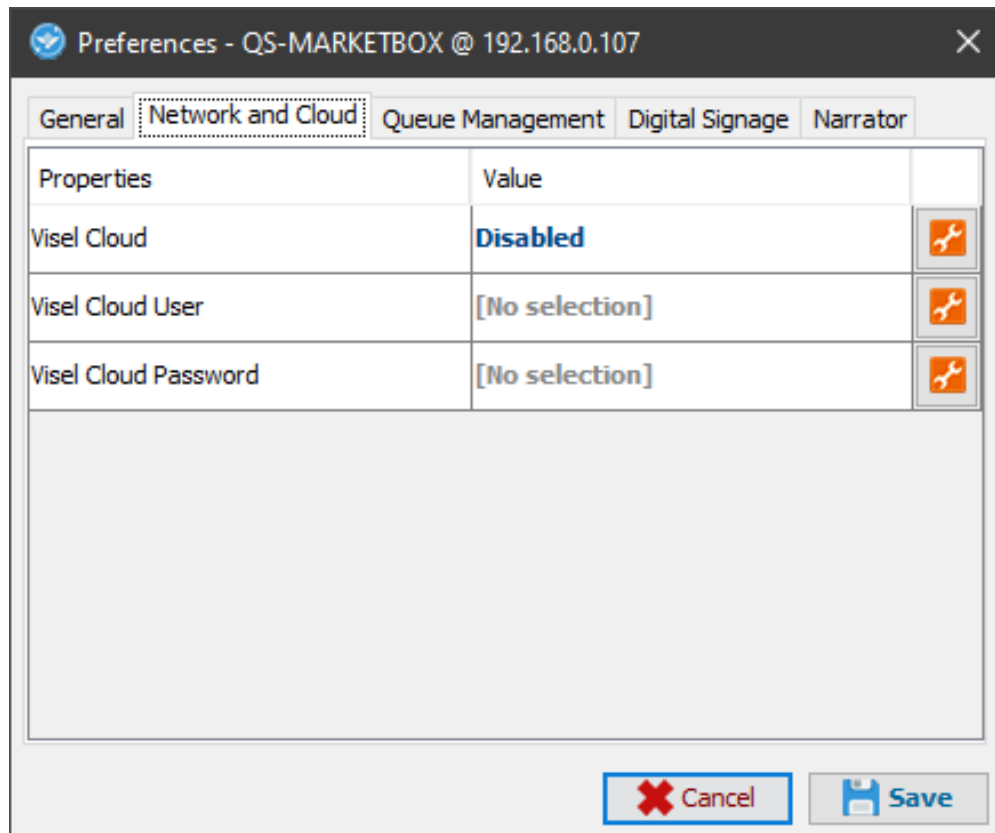
Figures 2 – Visel Sync: Device Search

Select QS-MARKETBOX and press the "Settings" button depicted with cursors



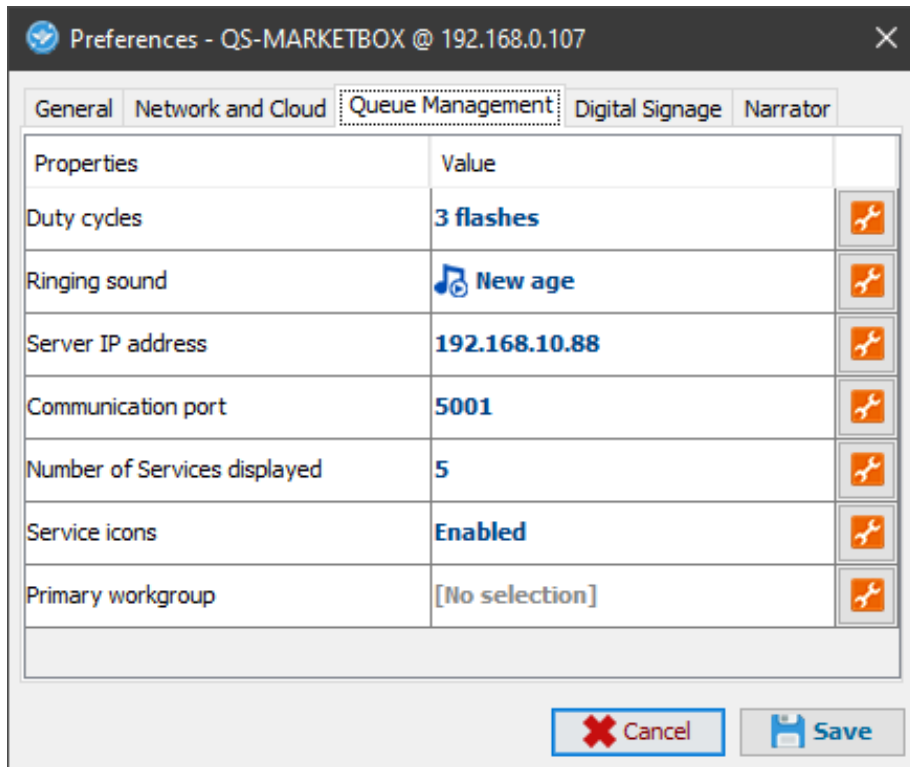
General

Property	Description
Device name	Name the device so you can quickly recognize it when searching
Customer logo	Inserts a custom logo that will be placed on top of the media playlist



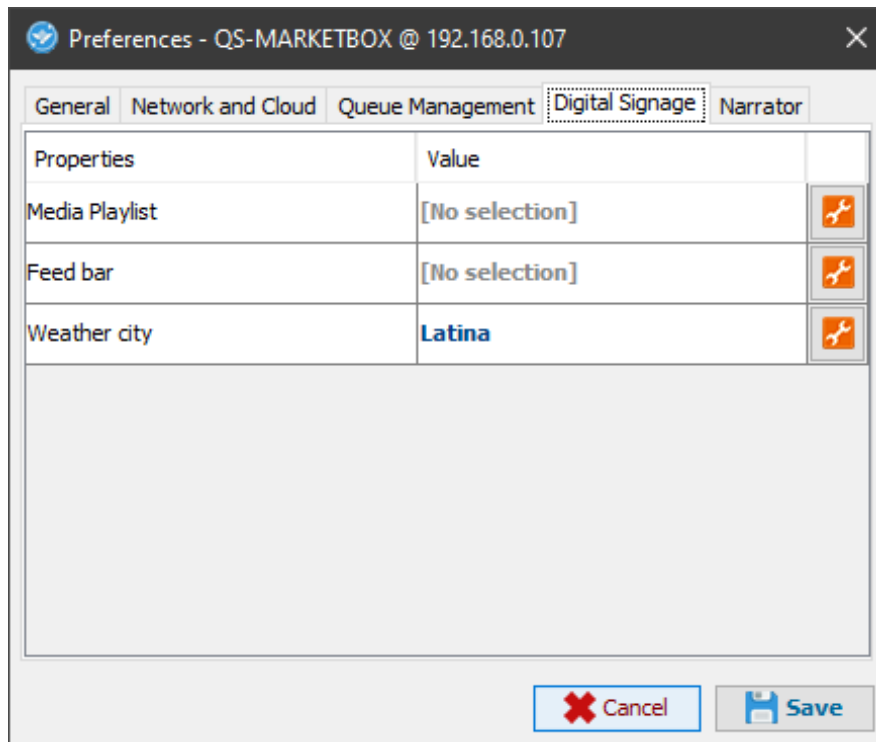
Network and Cloud

Property	Description
Visel Cloud	Enables the Visel Cloud platform for remote media management. For information about Visel Cloud contact our sales department.
Visel Cloud User	Set the profile username linked to your Visel Cloud subscription
Visel Cloud Password	Set the profile password linked to your Visel Cloud subscription



Queue management

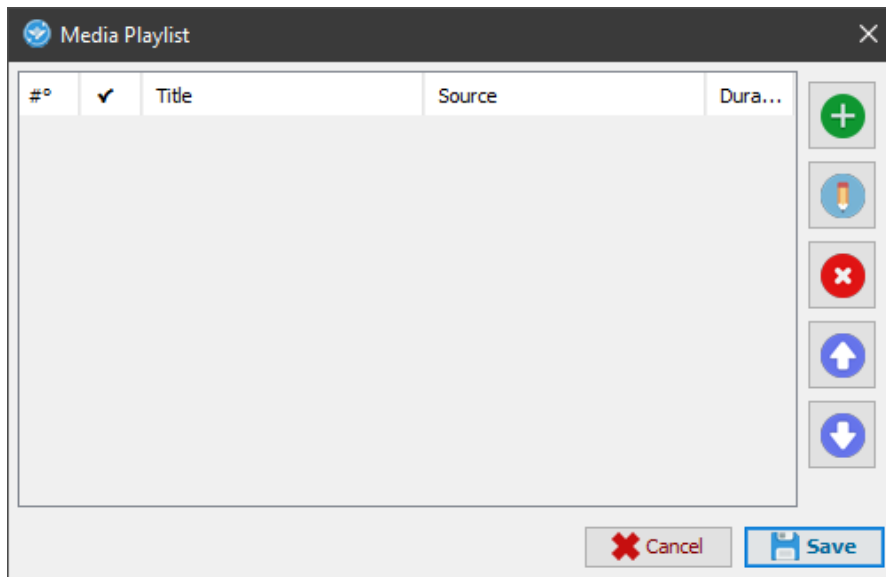
Property	Description
Intermittent cycles	Sets the number of flashes for animation of the shift number call. Press the wrench to change the value.
Call sound	Sets the sound type for the turn number call. Press the wrench to change the value.
Server IP address	Specifies the IP address of the code management server (Es: MicroTouch). Press the wrench to access the IP selector.
Communication port	Specifies the communication port (default 5001). Press the wrench to access the port selector.
Number of services displayed	Choose the number of services displayed in the shift numbering history. Press the wrench to change the numeric value.
Service icons	Enables or disables the presence of service representative images. Images associated with services are managed in queue server settings (E.g. MicroTouch). Press the wrench to enable/disable.
Main working group	Specifies a workgroup that will highlight the department where the display is installed (e.g. Bakery). Press the wrench to enter text.



Digital Signage

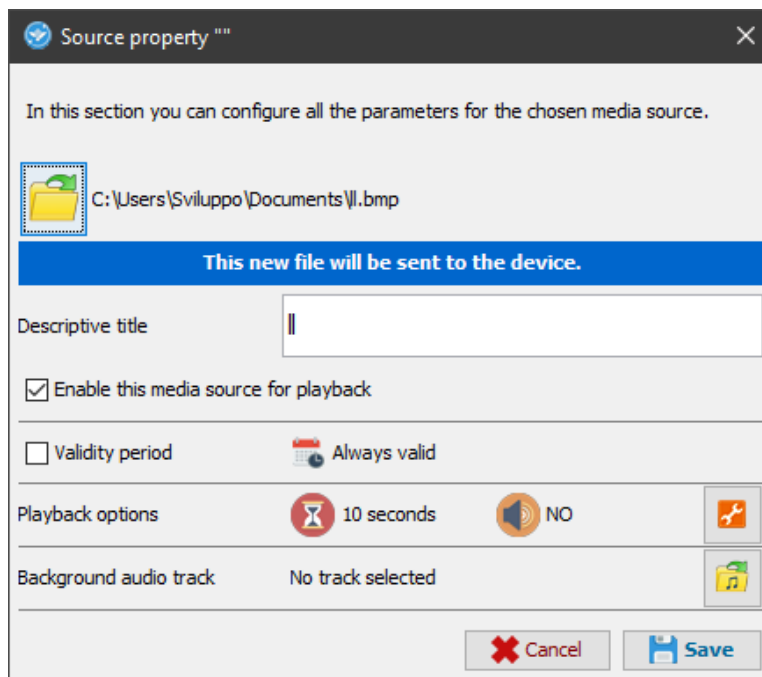
Property	Description
Media playlist	Allows you to program a media playlist. By clicking on the wrench you can access the media configuration panel.
Feed bar	Sets the list of RSS sources or custom text to show in the lower bar of the display. Press the wrench to access the feeds sub window.
Weather City	Specifies a location for the weather forecast. Click on the wrench to search for your city and set it.

Please note that if the Visel Cloud account is active, the local media playlist will be disabled and the media files from the Cloud playlist will be played. For more information about Visel Cloud, we recommend that you contact our sales department. If you have a Visel Cloud license, please see the platform's technical manual.



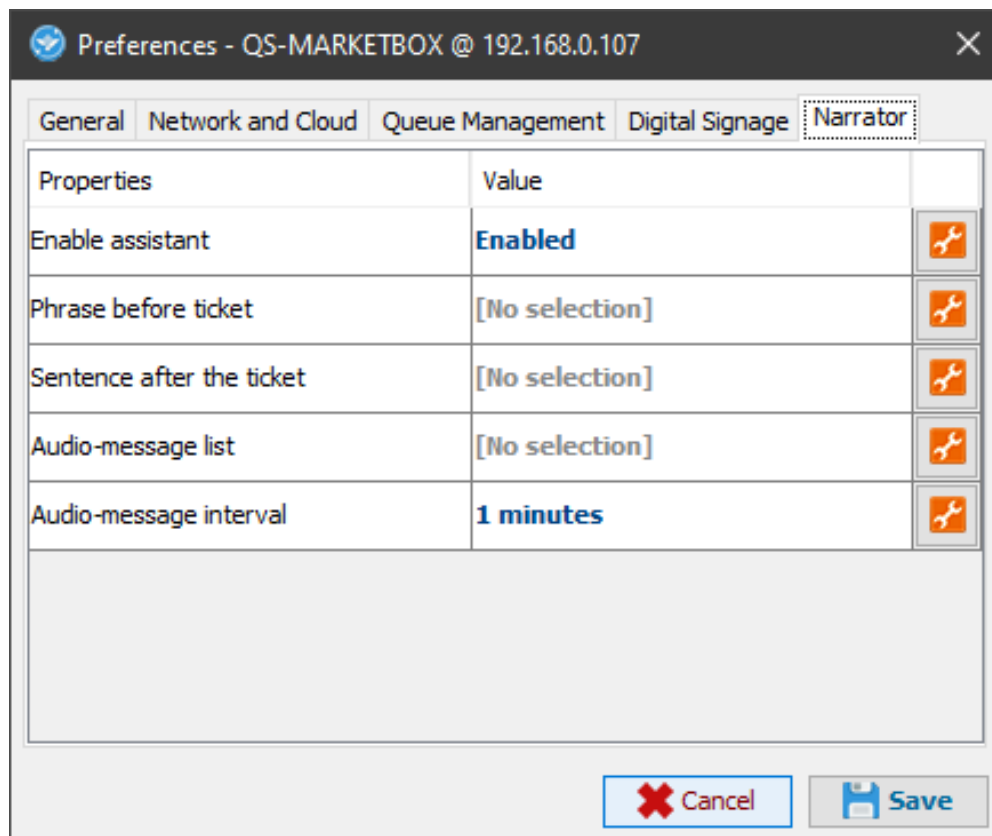
Managing your local media playlist

Property	Description
"Plus" button	Adds a new media source using local files.
"Pencil" button	Allows you to edit a source already in the list and its playback properties.
"X" button	Deletes a source from the list.
"Up Arrow" button	Moves a source toward the beginning of playback
"Down arrow" button	Moves a source toward the end of playback.



Source properties

Property	Description
File	Choose the location of the file that will be transferred to the device.
Descriptive title	Allows you to choose a title for the source to make it easier to identify within the playlist.
Enabling	Enables or disables the playback of the source.
Period of activity	Enables the playback of the source within a period of time.
Playback options	Allows you to change, where allowed, the time of stay and the volume of the source.
Background audio track	Specifies a background audio track if the source is an image.



Narrator

Property	Description
Voice assistant	Enables/disables the voice assistant. Click the wrench to enable/disable.
Sentence before ticket	Choose a text to say before the shift number is locution. Click on the wrench to write a text.
Sentence after ticket	Choose a text to say after the shift number is locution. Click on the wrench to write a text.
Audio-message list	Allows you to enter a playlist of voice messages, spoken at regular time. Click the wrench to access the audio-message panel.
Audio-message interval	Allows you to customize the time interval for audio-messages. Click the wrench to change this time.

Alternative voices

This product takes advantage of the capabilities of Google's preinstalled text-to-speech engine. If the voice you use is not to your liking you can install a different text-to-speech engine directly from Google Play (the Android digital store) after adding a Google account on the BOX. To add a Google Account, enter a mouse (or use the included remote control) and navigate to Settings -> Accounts and then add your Google Account. Among the text-to-speech engines on the market, Visel recommends **Vocalizer TTS**, which provides voices in many more languages than the basic one. Each item can be purchased directly from the store or within the app itself for the price of about .00 cadauna. To enable an alternative text-to-speech engine, simply go to Settings -> Language & Input -> Text-to-Speech Output and enable the alternate engine.

For more information about Vocalizer TTS, visit this link:

https://play.google.com/store/apps/details?id=es.codefactory.vocalizertts&hl=en_US

Troubleshooting

I can't find QS-MARKETBOX with Visel Sync

Verify that QS-MARKETBOX and the PC on which you are running Visel Sync are connected to the same network. If so, check the network for firewalls.

Visel Sync does not apply changes

Try starting Visel Sync with Administrator rights

QS-MARKETBOX does not display calls

Verify that you entered the correct IP address of the queue management server in the QS-MARKETBOX configuration panel in Visel Sync.

QS-MARKETBOX does not show weather forecasts or RSS news

Verify that QS-MARKETBOX is connected to the internet.

If other types of problems arise, we recommend that you contact our telephone support.

Visel Italiana Srl
Via Maira snc
04100 Latina (LT)
Tel: : 39 0773 416058
Email: sviluppo@visel.it Document drawn up on 12/12/10/2020