



QS-LITEBOX

Main server box for summary and history of shift numbers

**User manual for
device
management**

QS-LITEBOX

Client box for MicroTouch Lite queue management system

User guide for device management

Overview

Product description and context

QS-LITEBOX is a client box with Android operating system that allows you to view, appropriately connected in HDMI to a monitor, the history of the turn numbering along with a schedule of user-configurable multimedia content. The product home screen looks like the following photo:



Errore. Il segnalibro non è definito. – QS-LITEBOX home screen

How it works

This product requires a monitor, a TV, or a device that has an HDMI input, and possibly speakers to play audio. QS-LITEBOX also needs to be connected to the same network (LAN or WiFi) as the MicroTouch Lite queue management server for viewing calls and if the Internet is available it is able to show the weather and/or last-minute news through FEED RSS.

Prhyme Installation

Unpackaging

Installing QS-LITEBOX consists of a few simple steps:

- Take the box out of the box and put the batteries in the supplied remote control
- Connect the box to the power supply
- Connect the network cable
- Connect the monitor's HDMI cable
- Tune the monitor to the chosen HDMI source
- Wait for the system to load

When initialization has occurred, the main screen shown in [Figure 1](#) will appear on the monitor.

These operations are common for each QS-LITEBOX installed.

System configuration

Q-Discovery, Western

Q-Discovery is the universal Visel tool for configuring LAN devices. It consists of a PC-compatible application running Windows XP or higher. Visel recommends installing Q-Discovery only on the administrator's PC, which prevents non-workers from tampering with the system configuration.

- Download Q-Discovery from this link: <http://www.visel.it/en/download>
- Install and launch the application
- Click "Search for devices" to start setting up

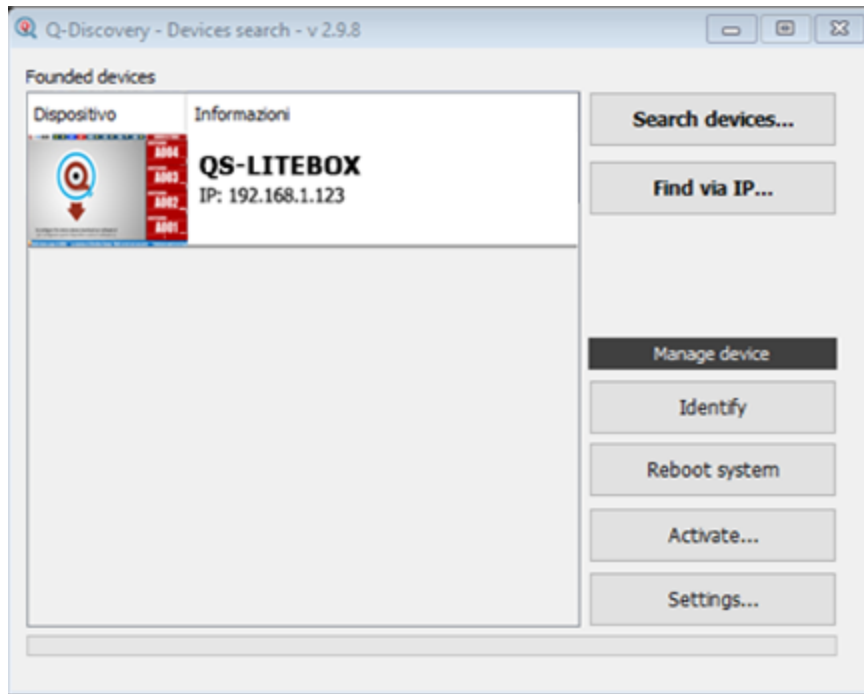
QS-LITEBOX

QS-LITEBOX can work in both DHCP and with a static IP address.

To configure a static IP, follow these steps:

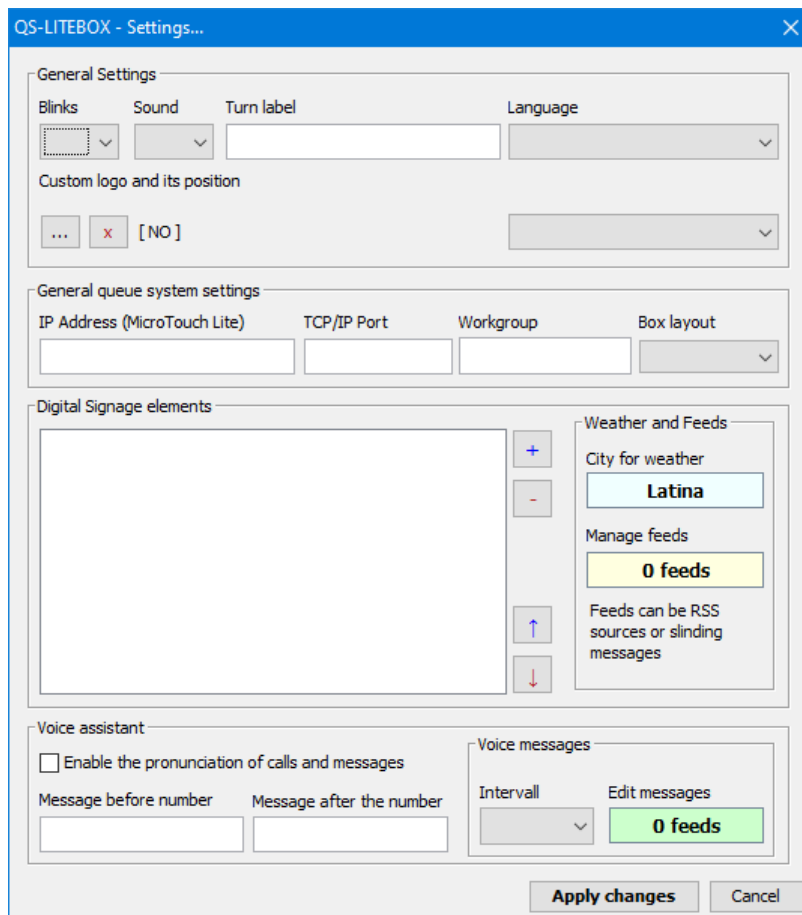
- Use the supplied remote control or connect a USB mouse to the box
- Press the "return" button on the remote control or the right mouse button to exit the Q-LITE application
- Go to the system settings and the "Cable" section and set the network parameters.
- Exit the settings and goto the main menu to launch the Q-LITE application

If QS-LITEBOX is configured correctly, you can manage its settings using the Q-Discovery application.



Errore. Il segnalibro non è definito. – **Q-Discovery:**
Searching for Devices

Select QS-LITEBOX and press "Settings". The secondary screen will appear:



General and Queue Management parameters

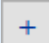
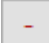


Property	Description
Flashes	Number of screen flashes while animating the last call
Sound	Sound effect when the call arrives
Turn label	Customizable text shown at the top right of the monitor
Box layout	Enables from 1 to 5 tiles that contain the turn number for the configured services. With 1 box configured, the display will reorganize as a three-position history, showing the last three numberings of the selected service.
Personalized logo	Allows you to choose an institutional logo and its location on the monitor
Language	User interface language for strings used on the monitor
IP Server	The IP address of the queue management server
Port	Communication port (default 5001)
Group	Call Target Workgroup. Used to view calls to different monitors.

Digital signage elements

You can configure a schedule of multimedia sources that will be published on the monitor in the appropriate area. Here is the list of file types supported by this device:

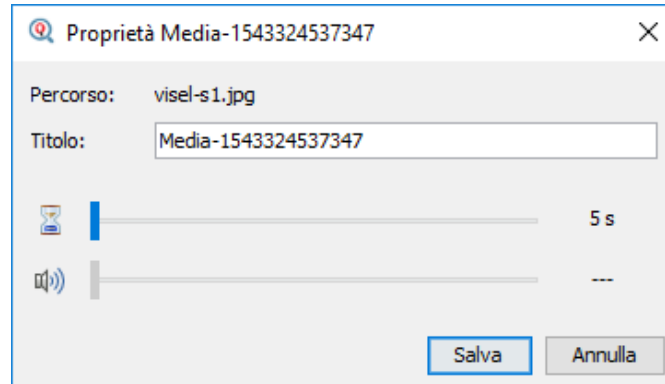
File type	Recommended resolution in pixels
JPG, GIF (non-animated), PNG, BMP, MP4 (video)	1440x900 full screen, considering 96 pixels in height engaged by the two horizontal header and footer bands

Possible actions with the list of media sources

Button	Description
	Adds a source to the list using the file picker
	Remove a source from the list
	Move source to the beginning of the playback order
	Move source to the end of playback order

<

By double-clicking a source in the list, you can customize its properties:



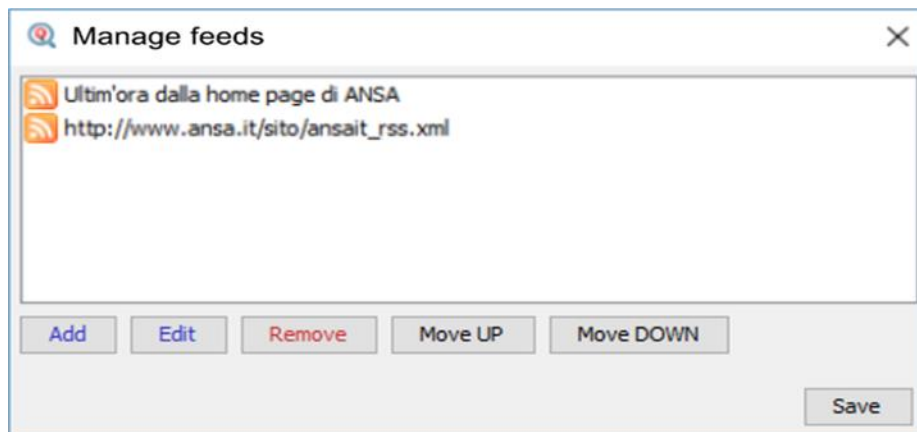
Errore. Il segnalibro non è definito. **Media Source Property Customization**

Property	Description
Path	The location of the remote file uploaded to the device
Title	Explanatory title of the media source
Stay	Screen time spent
Volume	Volume being played (video sources only)

Weather and Feeds

By clicking on the box containing the name of the city you will be able to set the current city for which to get the weather forecast.

By clicking on the box containing the number of feeds you will be able to configure a list of RSS sources or custom texts to be queued in the serpent that scrolls down:



Errore. Il segnalibro non è definito. - **Managing FEED**

Then use the action keys to add, edit, delete, or move sources for feeds. To apply the changes, click "Save".

Narrator

The device is equipped with a smart voice assistant that gives voice to everything the user writes. It can also reproduce the name and number of the calling seat.

Property	Description
Enable	By enhancing the checkbox, you can enable/disable the voice assistant.
Message before number	Text to play before the call is spoken
Message after number	Text to play after the call is spoken

Voice messages

The voice assistant can play a schedule of user-set phrases at regular deadlines.

Property	Description
Range	Defines the time interval before the next sentence is spoken
Message management	By clicking on the box you will be able to manage the schedule of the sentences similar to what happens with the Feed Management shown in Figure 10 .

For changes to the overall device configuration to take effect, press "Apply Changes".

Voice Alternatives

This product takes advantage of the capabilities of Google's preinstalled text-to-speech engine. If the voice you use is not to your liking you can install a different text-to-speech engine directly from Google Play (the Android digital store) after adding a Google account on the BOX. To add a Google Account, enter a mouse (or use the included remote control) and navigate to Settings -> Accounts and then add your Google Account. Among the text-to-speech engines on the market, Visel recommends **Vocalizer TTS**, which provides voices in many more languages than the basic one. Each item can be purchased directly from the store or within the app itself for the price of about € 4.00 each one. To enable an alternative text-to-speech engine, simply go to Settings -> Language -> Text-to-Speech Output and enable the alternate engine.

For more information about Vocalizer TTS, visit this link:

https://play.google.com/store/apps/details?id=es.codefactory.vocalizertts&hl=en_US

Troubleshooting

I can't find QS-LITEBOX with Q-Discovery

Verify that QS-LITEBOX and the PC on which you are running Q-Discovery are connected to the same network. If so, check your network for firewalls.

Q-Discovery does not apply changes

Try to start Q-Discovery with Administrator rights

QS-LITEBOX does not display calls

Verify that the correct QUEUE management server IP address has been entered in the QS-LITEBOX configuration panel in Q-Discovery.

QS-LITEBOX does not show weather forecasts or RSS news

Verify that QS-LITEBOX is connected to the internet.

If other types of problems arise, we recommend that you contact our telephone support.

Visel Italiana Srl
Via Maira snc
04100 Latina (LT)
Tel: : 39 0773 416058
Email: sviluppo@visel.it
Document drawn up on 11/12/2019