



QS-FOODBOX

Standalone server box for arbitrary queue management with Visel Cloud
Digital Signage

**User Manual for
device
management**

QS-FOODBOX

Standalone server for arbitrary queue management with Visel Cloud Digital Signage

Device Management User's Guide

Overview

Product description and context

QS-FOODBOX is a box with Android operating system that allows you to view, suitably connected in HDMI to a monitor, the history of the arbitrary turn numbering. In addition to queue management, you can view a media playlist, enriched by RSS news headlines.

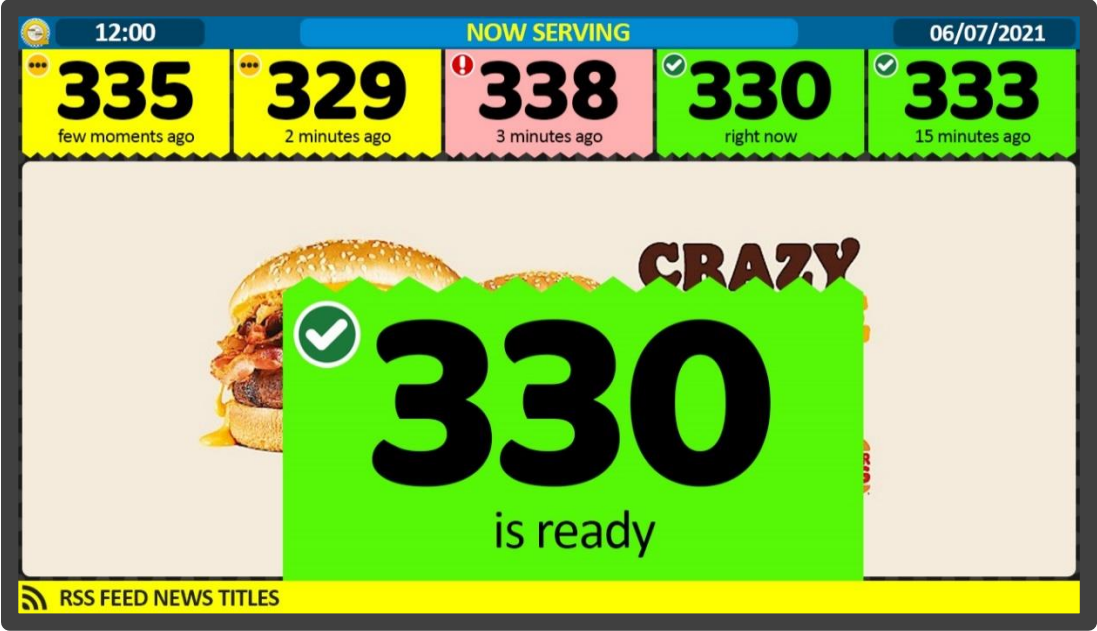


Figure 1 – QS-FOODBOX main screen.

Operation

This product requires a monitor, TV or device that has an HDMI input and possibly speakers to play audio and, if internet is available, it is able to show the news at the last hour via FEED RSS. This product has been designed for realities where there is a need to manage the flow of users according to priorities other than the one of arrival.

First Installation

Unpackaging

The installation of QS-FOODBOX consists of a few simple steps:

- Remove the box from the package and insert the batteries into the supplied remote control
- Connect the box to the power supply
- Connect the network cable
- Connect the monitor's HDMI cable
- Tune the monitor to your chosen HDMI source
- Wait for the system to load

After initialization, the main screen shown in Figure 1 will appear on the monitor.

These operations are common for every QS-FOODBOX installed.

System configuration

Visel Sync (Configurator)

Visel Sync is the tool needed to configure this product. It consists of a PC-compatible application with a Windows XP operating system or higher. Visel recommends that you install Visel Sync only on your administrator's PC to prevent non-professionals from tampering with your system configuration.

- Download Visel Sync from this link: <http://www.visel.it/it/download>
- Install and launch the application
- Click on the magnifying glass to start searching

QS-FOODBOX

QS-FOODBOX needs a static IP address on the network.

To configure a static IP, follow these steps:

- Connect a USB mouse to the box
- Press the right mouse button to exit the active application
- Go to the system settings and the " Network " section set network parameters.
- Exit the settings and go to the main menu to launch the Q-LCD application

If QS-FOODBOX is configured correctly, it will be possible to manage its settings through the Visel Sync application.

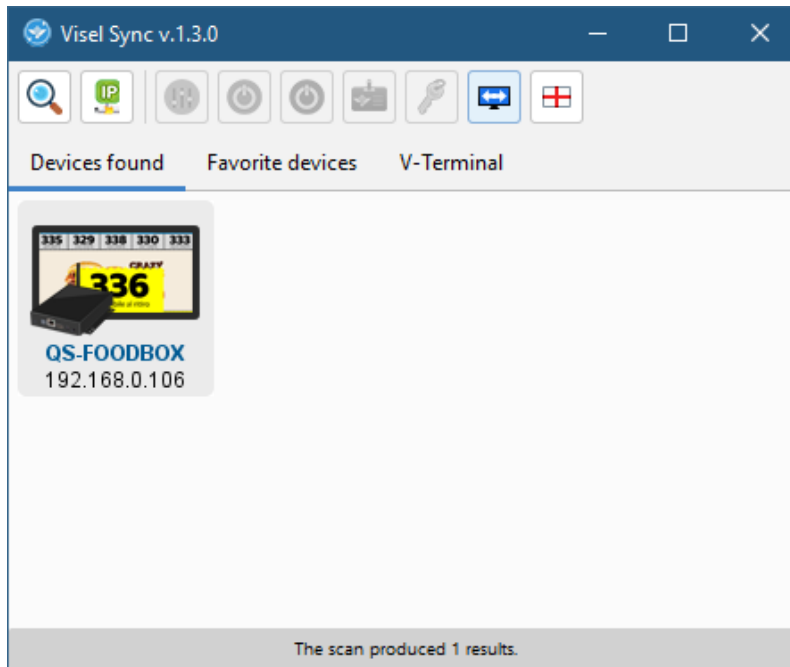
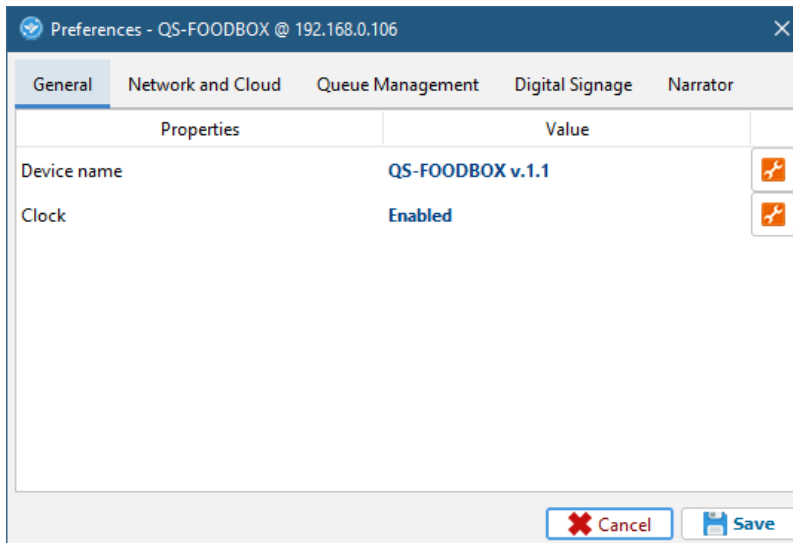


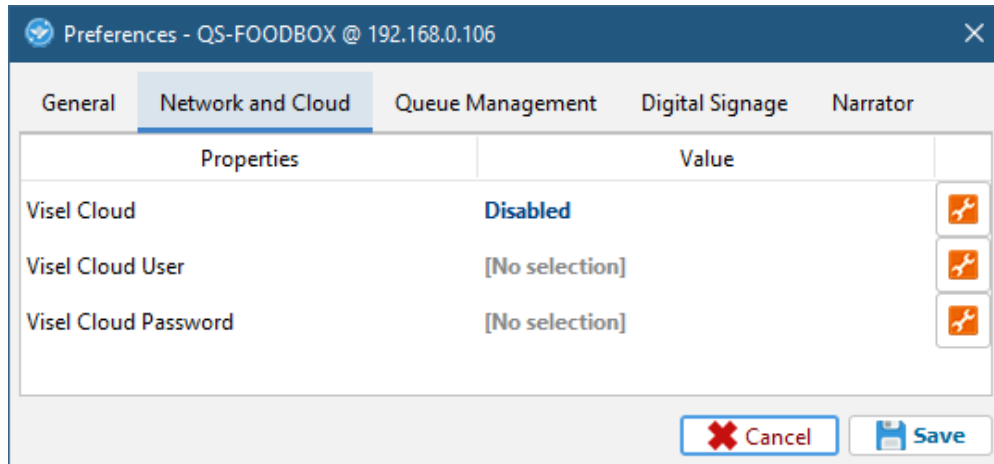
Figure 2 – Visel Sync: Device Search

Select QS-FOODBOX and press the "Settings" button depicted with sliders



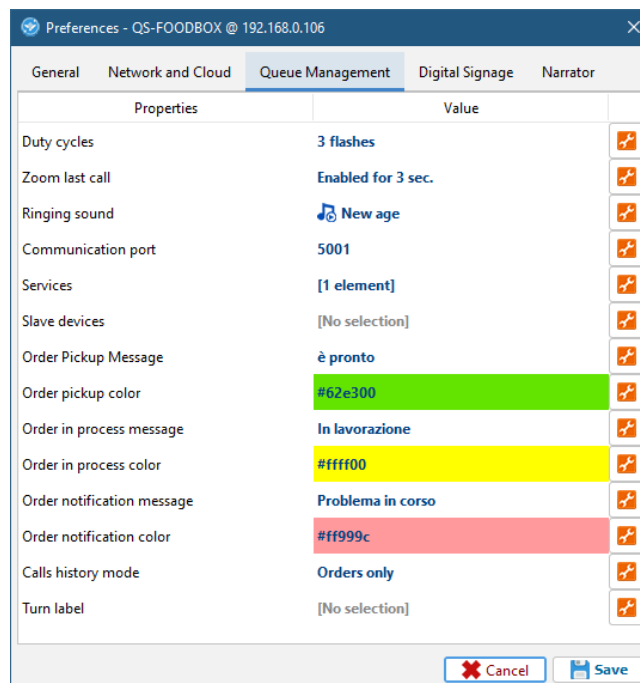
General

Property	Description
Device name	Allows you to name the device so you can quickly recognize it when searching
Customer logo	Inserts a custom logo that will be placed above the media playlist



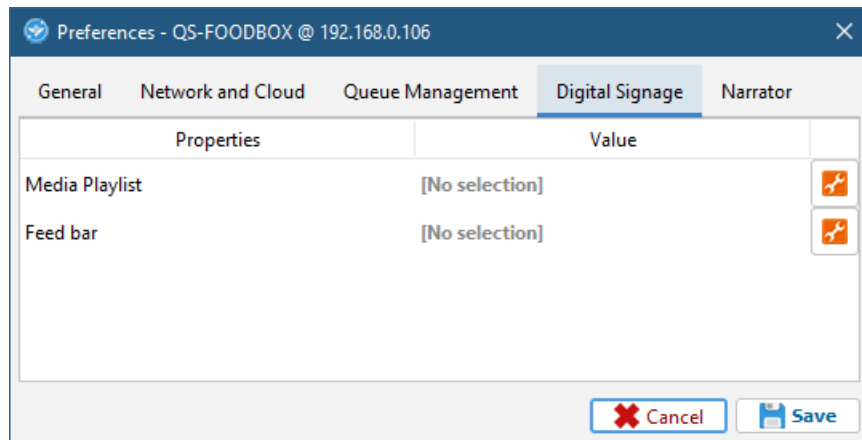
Network and Cloud

Property	Description
Visel Cloud	Enables the Visel Cloud platform for remote media management. For information about Visel Cloud contact our sales department.
Visel Cloud User	Set profile username linked to Visel Cloud subscription
Visel Cloud Password	Set the password for the profile linked to the Visel Cloud subscription



Queue management

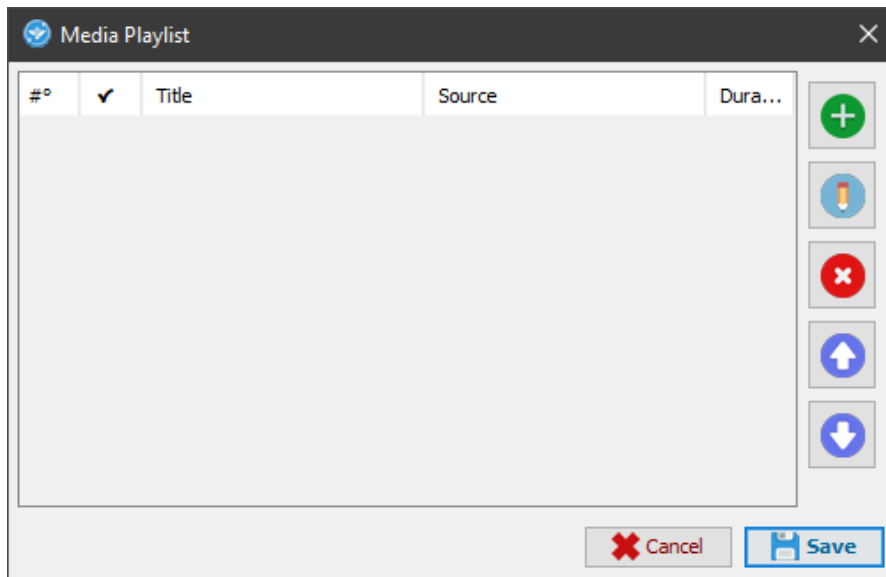
Property	Description
<i>Duty cycles</i>	Allows to change the repeat count of the blink animation for the last call
<i>Zoom last call</i>	Let's you present the latest zoomed-in call to get the attention of waiting users better
<i>Ringing sound</i>	Sets the sound type for the shift number call. Press the wrench to change the value.
<i>Communication port</i>	Allows to change the communication UDP port for other QS-FOODBOX slaves
<i>Order pickup message</i>	Allows you to change the accompanying message for the order pickup call
<i>Services</i>	Allows you to enable the turn services using a manual ticket dispenser
<i>Call History Mode</i>	Allows you to show in the calls history only the orders or even the turn numbering
<i>Order pickup color</i>	Allows you to change the background color for the order pickup call
<i>Order in process message</i>	Allows you to change the accompanying message for the order in progress call
<i>Order in process color</i>	Allows you to change the background color for the order in progress call
<i>Order notification message</i>	Allows you to change the accompanying message for a notification call
<i>Order notification color</i>	Allows you to change the background color for an alert call
<i>Turn label</i>	Inserts text that will appear in the right history in each call, above the shift number.



Digital Signage

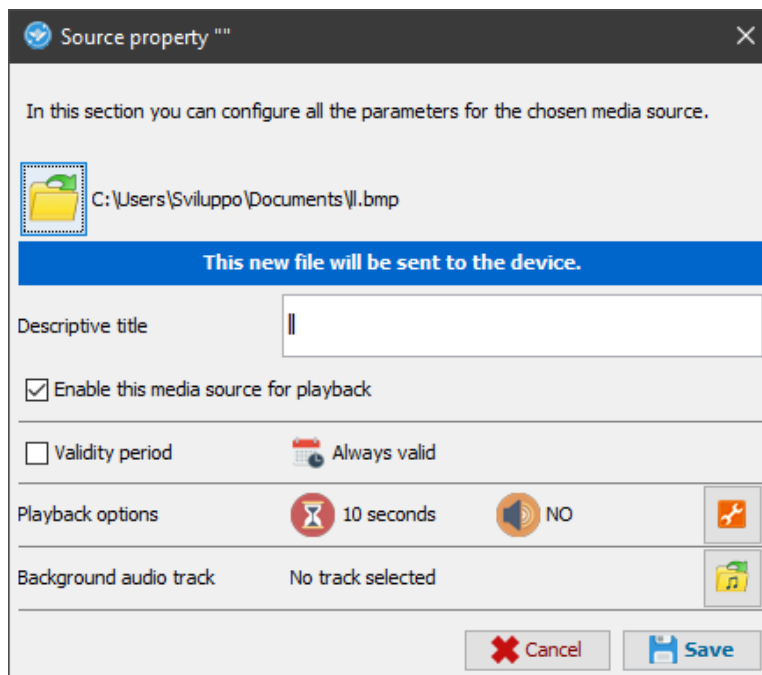
Property	Description
Media playlist	Allows you to program a media playlist. By clicking on the wrench you will be able to access the multimedia content configuration panel.
Feed bar	Sets the list of RSS sources or custom texts to show in the bottom bar of the display. Press the wrench to access the secondary feeds window.

Warning: In the presence of the active Visel Cloud account, the local media playlist will be disabled and the media files of the remote playlist will be played. For more information about Visel Cloud, we recommend that you contact our sales department. If you have a Visel Cloud license, please consult the platform's technical manual.



Managing your local media playlist

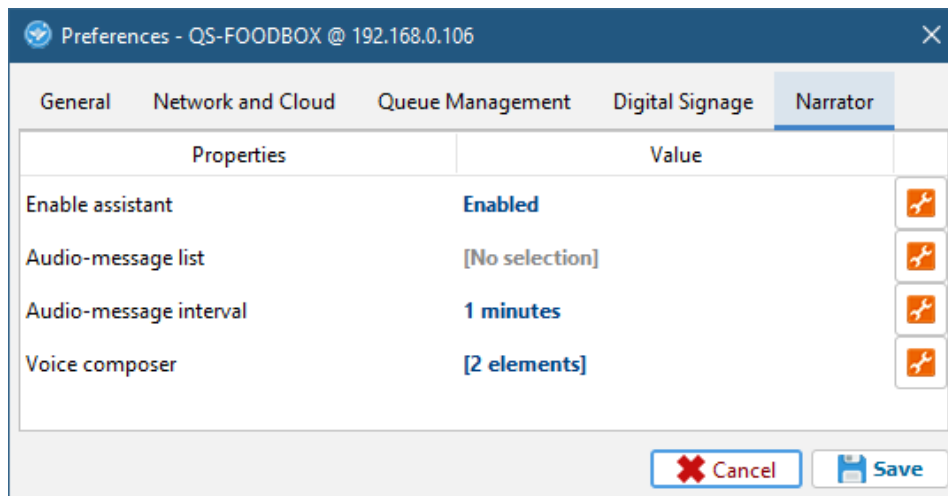
Property	Description
"+" button	Adds a new media source using local files.
"Pencil" button	Edits a source that is already in the list and its playback properties.
"X" button	Deletes a source from the list.
"Up Arrow" button	Moves a source to the beginning of playback
"Down Arrow" button	Moves a source towards the end of playback.



Source properties

Property	Description
<i>file</i>	Chooses the location of the file that will be transferred to the device.
<i>Descriptive title</i>	Choose a title for the source to make it easier to identify within the playlist.
<i>Enabling</i>	Enables or disables source playback.
<i>Period of activity</i>	Enables source playback within a period of time.
<i>Playback options</i>	Allows you to change, where allowed, the time of stay and the volume of the source.
<i>Background audio track</i>	Specifies a background audio track if the source is an image.

The suggested resolution for each media is 1270x500 pixel. The maximum supported resolution is 1920x1080 pixel.



Voice assistant

Property	Description
Narrator	Enables/disables narrator. Click the wrench to enable/disable.
Audio-message list	Inserts a playlist of voice messages, spoken at regular intervals of time. Click on the wrench to access the audio-message panel.
Audio-message interval	Customizes the time frame for audio messages. Click on the wrench to change this time.
Vocal composer	Composes the phrase by inserting the elements that make up the ticket. Press the wrench to change the phrase items.

Alternative voices

This product takes advantage of the features of Google's pre-installed text-to-speech engine. If the voice used is not to your liking you can install a different text-to-speech engine directly from Google Play (the Android digital store) upon the addition of a Google account on the BOX. To add a Google account, insert a mouse (or use the supplied remote control) and navigate to Settings -> Accounts and then add your Google account. Among the text-to-speech engines on the market, **Visel recommends Vocalizer TTS** which provides voices in many more languages than the basic one. Each item can be purchased directly from the store or within the app itself at the price of about € 4.00 each. To enable an alternative text-to-speech engine, simply go to Settings -> Language and Input -> Text-to-speech output and enable the alternative engine.

For more information about TTS Vocalizers, visit this link:

https://play.google.com/store/apps/details?id=es.codefactory.vocalizertts&hl=en_US

Usage with QS-FOODKEY

QS-FOODKEY is a virtual pad for Android devices that allows the user to manage the numbering on QS-FOODBOX. To use this product is necessary to activate a paid software license.



Figure 8 – QS-FOODKEY layout

0-9 + ...

“Order in progress” call

0-9 + Δ

“Order notification” call

C1

Clear the number selection

C2

Clear the number queue

-1

Call the previous turn number decreasing a unit

+1

Call the next turn number incrementing a unit

0-9 + ✓

“Order pickup” call

R

Repeat the calling of last order number

Long press on R

Repeat the calling of last turn number

The gear icon, on the top right corner, is used to change the master QS-FOODBOX IP address and the UDP communication port.

Usage with QS-WEBFOOD

QS-WEBFOOD is a web virtual pad that allows the user to manage the numbering on QS-FOODBOX through a common Web Browser. To use this product is necessary to activate a paid software license.



Figure 9 – QS-WEBFOOD layout

SECTION RELATING TO STATUS MANAGEMENT

num – Write the number to manage

> – Select status for number



-> Send Number and status to FOODBOX

QUEUE MANAGEMENT SECTION (if enabled)



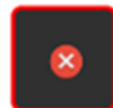
-> Go back with QMS



-> Repeat last number QMS



-> Next number QMS



-> Clear function (for QMS and Status)

To use the QS-WEBFOOD web console, simply open a web browser from a device on the same network as the QS-FOODBOX and visit the IP address: <http://xxx.xxx.xxx.xxx:8000> (change "x" value with the correct number).

Troubleshooting

I cannot find QS-FOODBOX with Visel Sync

Verify that QS-FOODBOX and the PC on which you are running Visel Sync are connected to the same network. If so, check your network for firewalls.

Visel Sync does not apply changes

Try starting Visel Sync with Administrator rights

QS-FOODBOX does not display calls

Verify that you have entered the correct IP address of the Queue Manager in the QS-FOODBOX configuration panel in Visel Sync.

QS-FOODBOX does not show RSS news

Verify that QS-FOODBOX is connected to the internet.

If other types of problems arise, we recommend that you contact our telephone support.

Visel Italiana Srl
Via Maira snc
04100 Latina (LT)
Tel: +39 0773 416058
Email: sviluppo@visel.it
Document drawn up on 07/02/2025